

# **LENS : Learning Environment by Network Service**

**Brian (Se-Yeon) Won**  
researcher of DUNET  
(Digital University Network)  
[support@dunet.co.kr](mailto:support@dunet.co.kr)

# About DUNET Profile

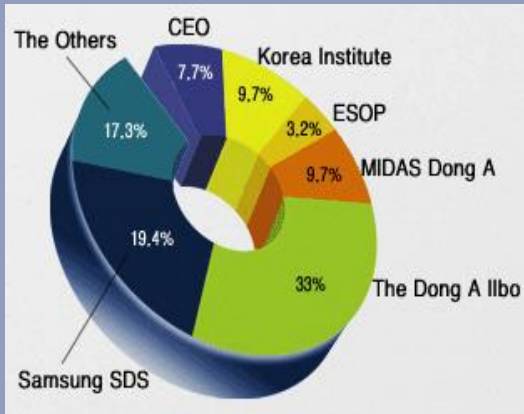
# DUNET

Subsidiary of Dong-A Ilbo Media Group

Excellent e-Learning Enterprise

- Dong-Ilbo, Major Korean Press
- Major Investor Relation  
: Dong-Ilbo, Samsung SDS

- Leader of Policy, Standardization
- Technical Development
- Industrialization



Capital \$ 3 million

Established '00.8

Shareholders

Dong-A 49%

Samsung SDS 18%

The Others : 33%

Experience

Since 2000, Verified K-12, University, Public

Leader of Korean e-Learning

Policy

Cyber-Learning, Quality Certification System

Standardization → SCORM etc.

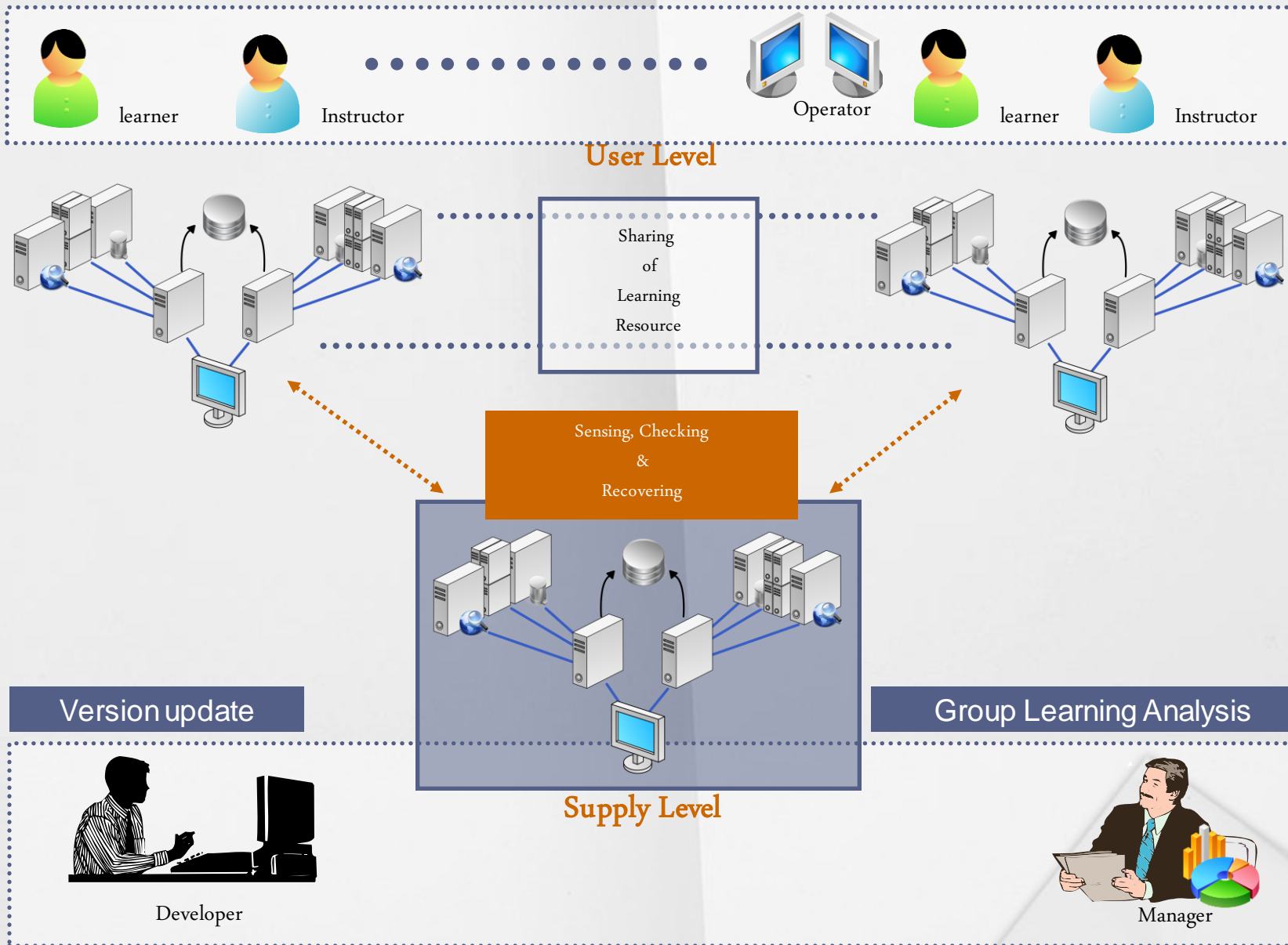
# Table of Contents

- 1 LENS is...**
- 2 System Concept**
- 3 System Conformance**
- 4 Features**
- 5 Introduction Effect**
- 6 Future Development Course**

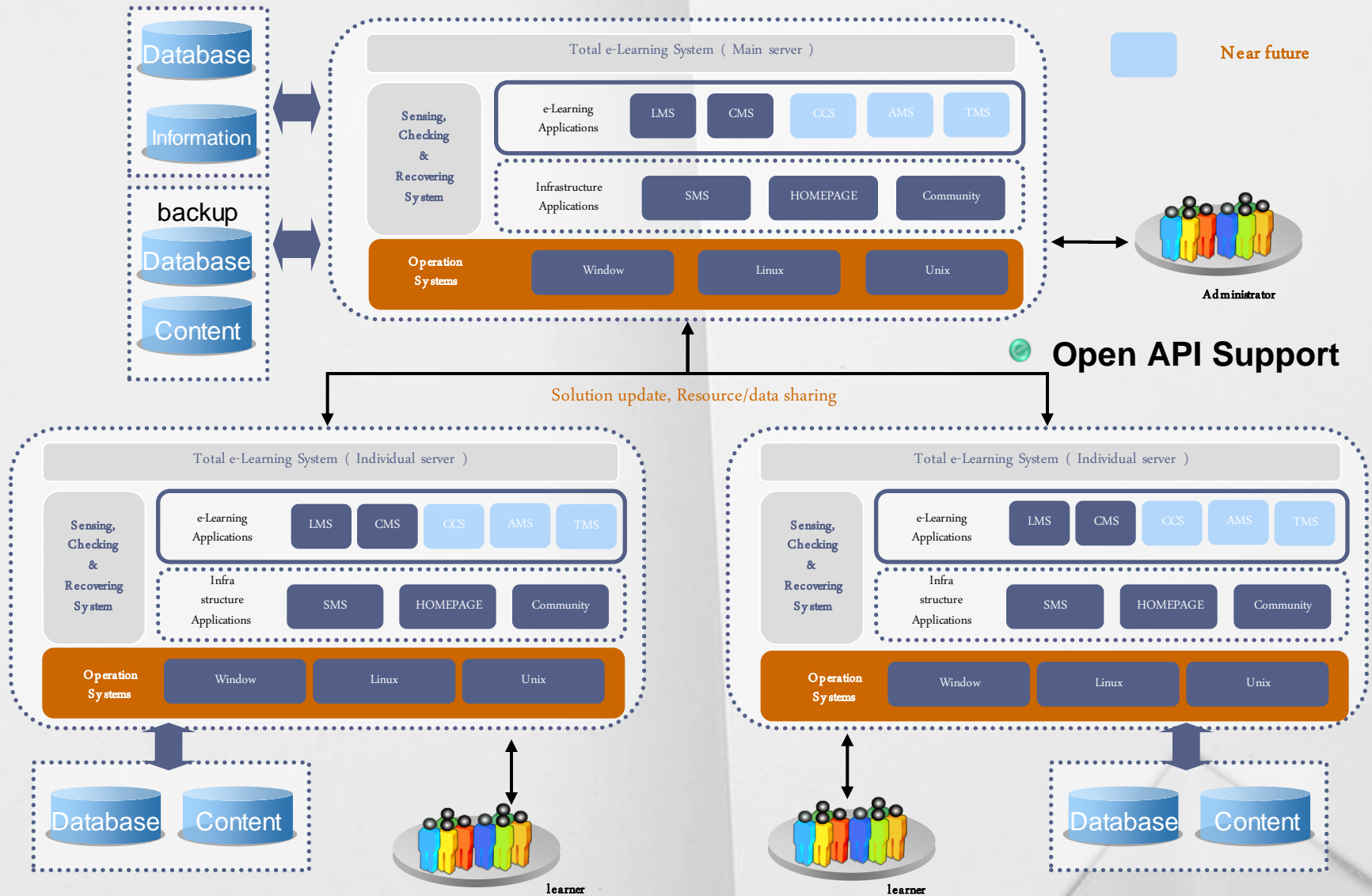
## Introduction

- LENS : Learning Environment by Network Service
- Updated solutions, maintenance and repair can be provided through network service.
- The main server monitors the individual server's conditions to recover any occurring errors.
- LENS is the result of the projects that have been running for 7 years through sponsorship by the government of US \$ 15 million.
- LENS system provides all possible solutions (LMS[ Learning Management System ], CMS[ Content Management System ], AMS[ Authoring Management System ], DMS[ Content Development Management System ] ) for e-learning.
- Though currently, LMS and CMS are being aspired by LENS there are plans to add AMS and DMS in the near future.
- It's remarkably cutting edge skills leading to next generation technology.

# System Concept



# 3 System Conformance



## Rapid LMS Service

- Organizations Registration

- Connector Install

- LMS Install

- LMS Service

- Sensing, Checking & Recovering

- Rapid install and service

- Continuous upgrade



LENS Administrator

Organizations

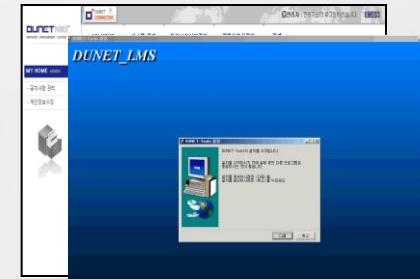
Registration



Service Manager

Install

Dunet tool



## Sharing academic resources

- Upload Sharable Academic Resource
  - Data, Content and Academic activities
- Academic Resource Monitoring
- Sharable Academic Resource Service





# 4 Features(3)

## Adjusting e-Learning Service

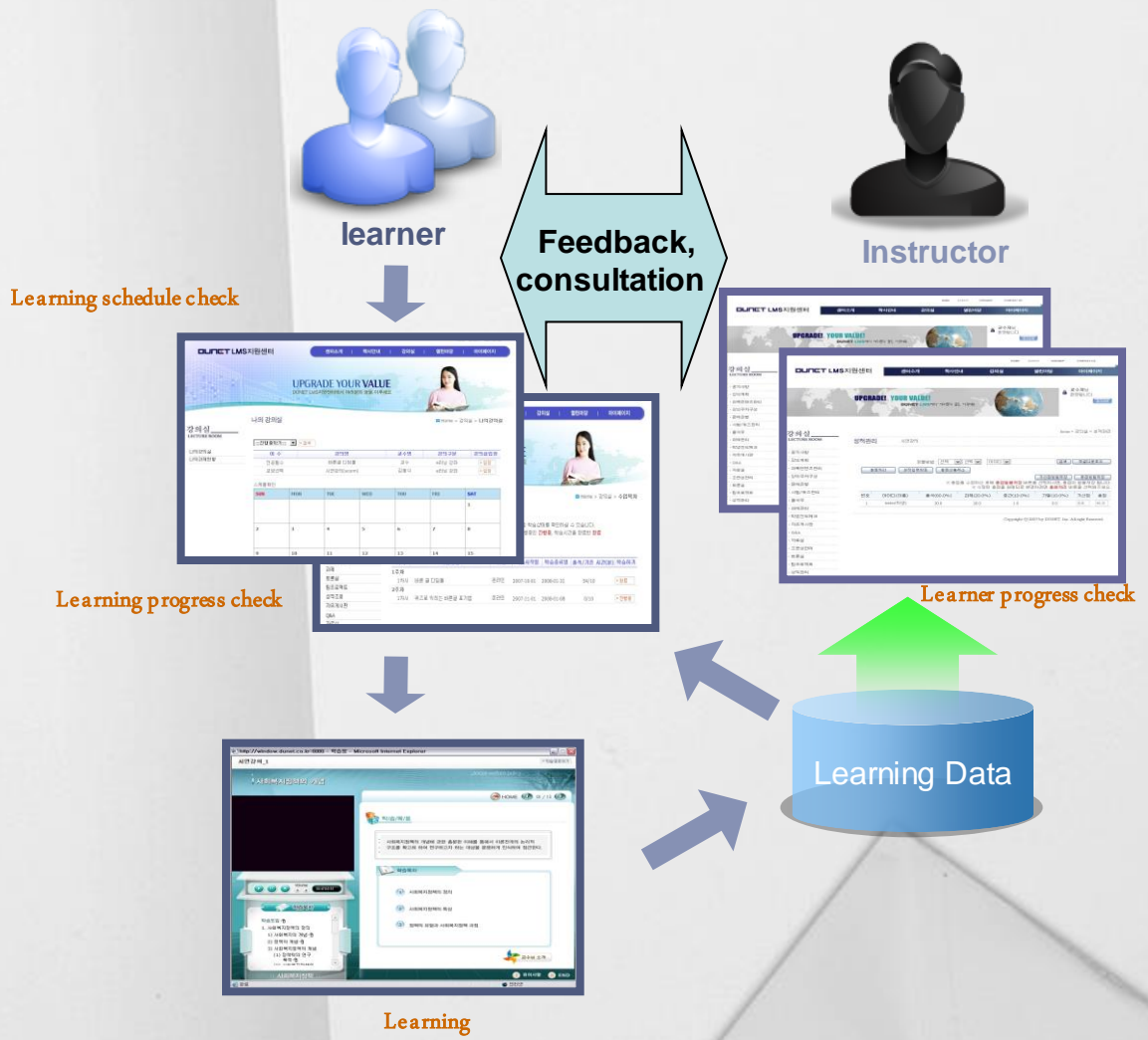
### learner

- Learning
- Learning schedule check
- Learning progress check



### Instructor

- Learner progress check
- Learning Test



# 4 Features(4)

## Systematization of e-Learning service management

Main Server



LMS A,B

Learning Activities

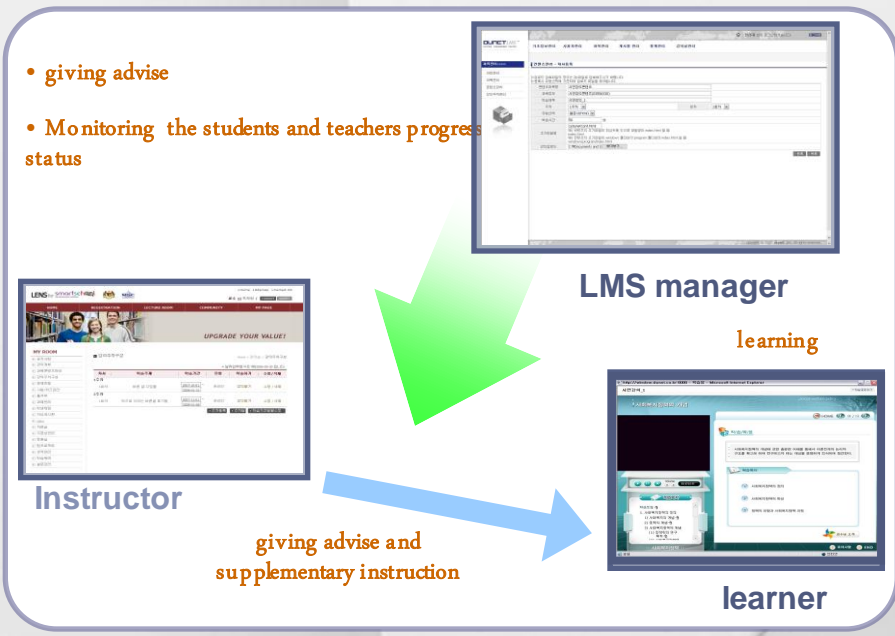
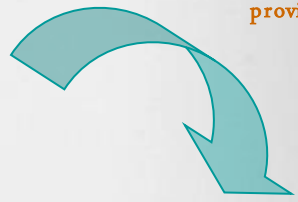
Main Server

LMS manager

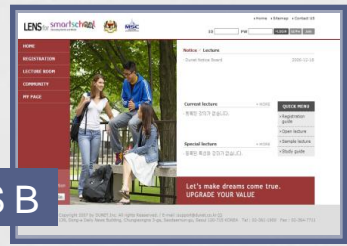
giving advise

Statistical data provision

Learning Activities



LMS A



LMS B

# 4 Features(5)

## e-Learning Policy Measurement for each LMS

- Sharing statistical data from Learning Activities
- Sharable content information
- The diverse learning activities of all the learner

- e-Learning policy measure
- own future academic plans



## Economic Effect

**- e-Learning Service ( Average )**

( unit : USD )

Solution	System Integration		LENS	
	Cost	Time	Cost	Time
LMS	160,000	5~6 month	12,000	3-4 hours
LCMS	40,000	2 month	3,000	
AMS	20,000	-	3,000	

1) Efficiently centralized control by LENS

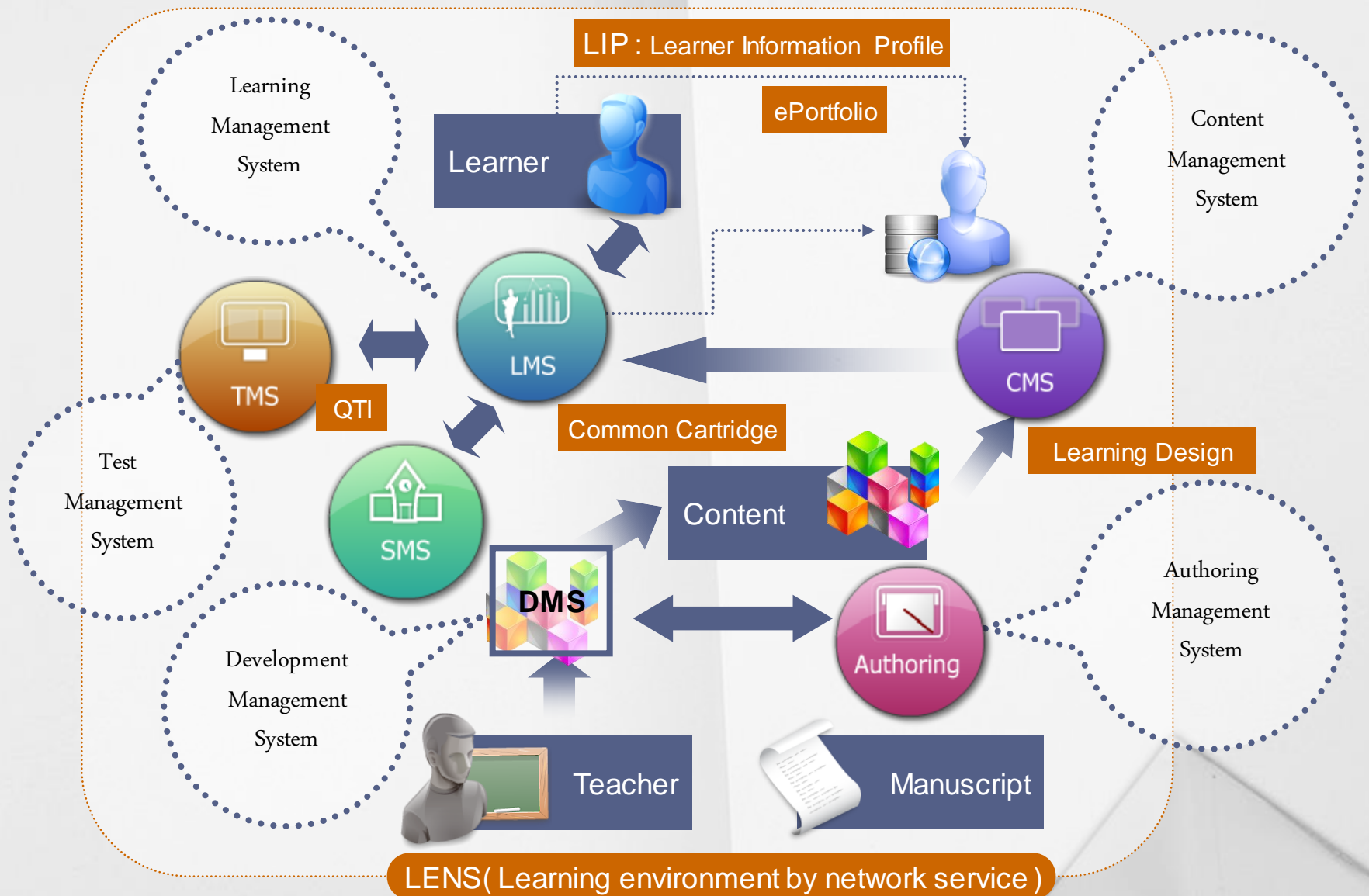
2) Rapidly construct the solution (LMS, LCMS, AMS etc.) & Economical Service Cost

※ In the case of multiple students using the same resources because content that are offered at LENS are shared, the cost of manufacturing the content will be reduced.

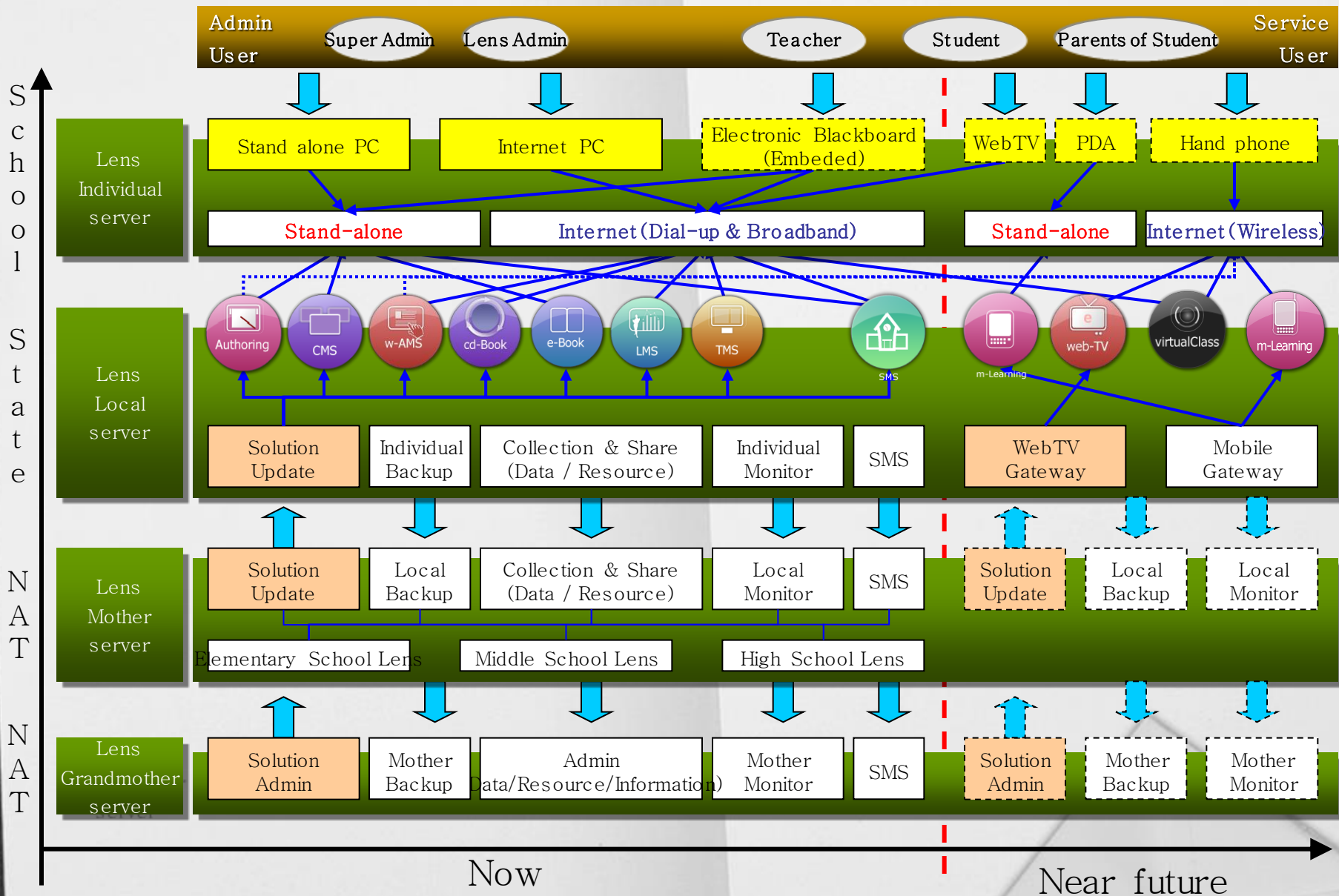
## Operation Effect

- 1) Operators can now easily construct and operate a learning environment through the offered course property and course-finish processing regulations by the system..
  - 2) It is possible to easily create an e-learning service through the offered homepage management for the operator to select their desired designs by using discussion board, survey, community ..etc..
- ※ LENS designed for distribution structure, is applicable to every resources between different school, company and public institution.
- As well, it will help to maximize the educational effectiveness by sharing and effectively operating the learning resources, functions and environment on the network.

# Future Development Course



# Future Development Course



# Thank you

- Corporate name

DUNET, Inc

- Homepage

<http://www.dunet.co.kr>

- Content demo site

<http://contents.dunet.co.kr>

- Address

139 Chungjeongno 3-ga, Seodaemun-gu, Seoul 120-715 Korea

- Telephone

(822)361-1900

- Fax

(822)364-7711

- Contact :

Vice president : Cha, Nam-ju / Tel. 822.361.1901

Mobile. 82.10.2018.4255 / email : [gentleman@dunet.co.kr](mailto:gentleman@dunet.co.kr)

Marketing Div : Ryu, Jung-In / Tel. 822.361.1985

Mobile. 82.19.226.7713 / email : [atblues@dunet.co.kr](mailto:atblues@dunet.co.kr)

Solution Div : Kim, Soon-ki / Tel. 822.361.1936

Mobile. 82.16.838.3921 / email : [jatmon@dunet.co.kr](mailto:jatmon@dunet.co.kr)

Solution Div : Brian Won / Tel. 822.361.1921

Mobile. 82.11.9770.9778 / email : [seyeonwon@dunet.co.kr](mailto:seyeonwon@dunet.co.kr)