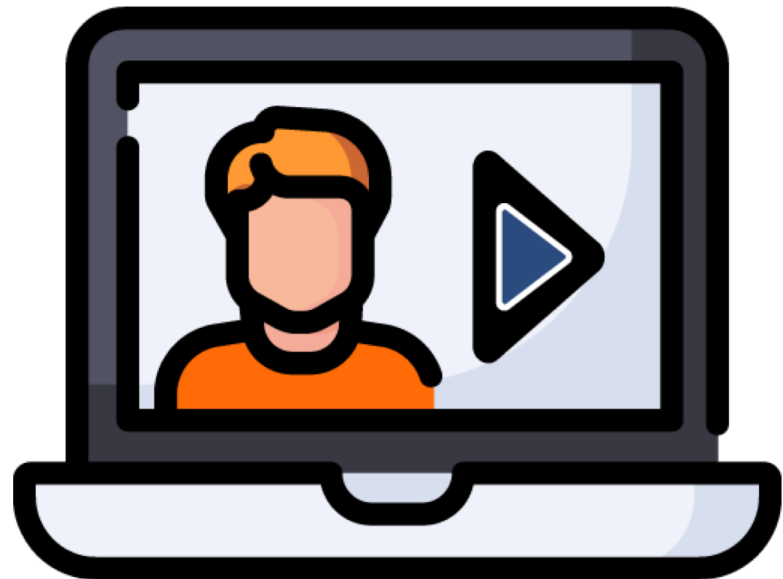


Only Treats, No Tricks with the New LTI Resource Search

Hello and thank you for joining us today!
We will start at the top of the hour.

PLEASE NOTE: Your audio is muted and
will remain muted during the webinar.

Use the Q&A feature to submit your
questions!





IMS GLOBAL[®]

Learning Consortium

Better Learning From Better Learning Technology[®]

Jill Hobson



K-12 Institutional Program Manager
jhobson@imglobal.org

Cara Jenkins



Director of Marketing Communications
cjenkins@imglobal.org

Only Treats, No Tricks with the New LTI Resource Search



Presented by:



IMS GLOBAL
Learning Consortium
Better Learning From Better Learning Technology®

GUEST SPEAKERS

Adam Blum

Senior Director of OpenEd/ACTNext, ACT

Vikash Jaiswal

Chief Technology Officer, Knovation

Ray Baranoski

Senior Software Developer, SAFARI Montage

Keith Osburn

Associate Superintendent, GA Virtual Learning, GA Dept of Education

IMS Global Learning Consortium

LEADING the advancement of educational technology and innovation for more than **20 YEARS**

Becoming one of the **LARGEST & MOST INFLUENTIAL** member-based standards consortium in the world and the only organization achieving pervasive edtech standards adoption across K-20 and corporate education

1997
IMS is established as a collaborative of educational institutions and edtech suppliers and work begins to develop standards to enable the adoption and impact of innovative learning technology.

2010
The launch of the Learning Tools Interoperability® (LTI®) standard revolutionized edtech by providing institutions and suppliers with a standard and secure way to connect a learning tool to an LMS or learning platform.

2013
IMS launches the Caliper Analytics® standard, the world's first comprehensive framework for collecting clickstream educational data created by the education community for the education community.

2016
The rapid adoption of IMS OneRoster® is driven by K-12 school districts wanting to leverage the standard for a secure and uniform way to provision digital applications with class rosters.

2017
IMS introduces LTI Advantage—the preferred edtech industry standard for product integration—extending the revolutionary LTI standard to enable next generation teaching and learning architecture.



50
NET NEW MEMBER ORGANIZATIONS ADDED IN 2017



379
PRODUCT CERTIFICATIONS IN 2017



475
MEMBER ORGANIZATIONS (AND GROWING)

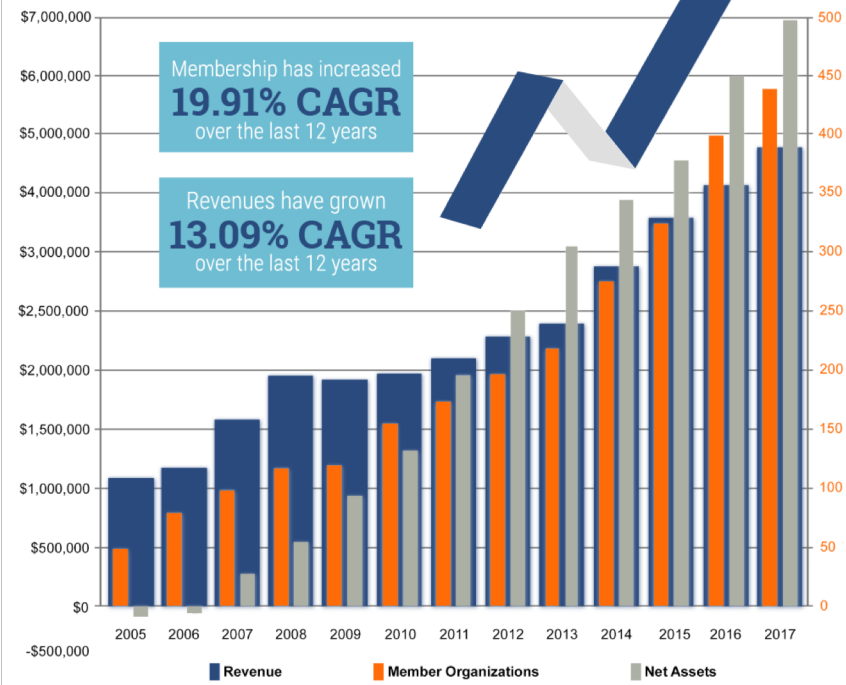


\$4,777,615
RECORD LEVELS OF REVENUE GROWTH FOR THE 12TH YEAR IN A ROW



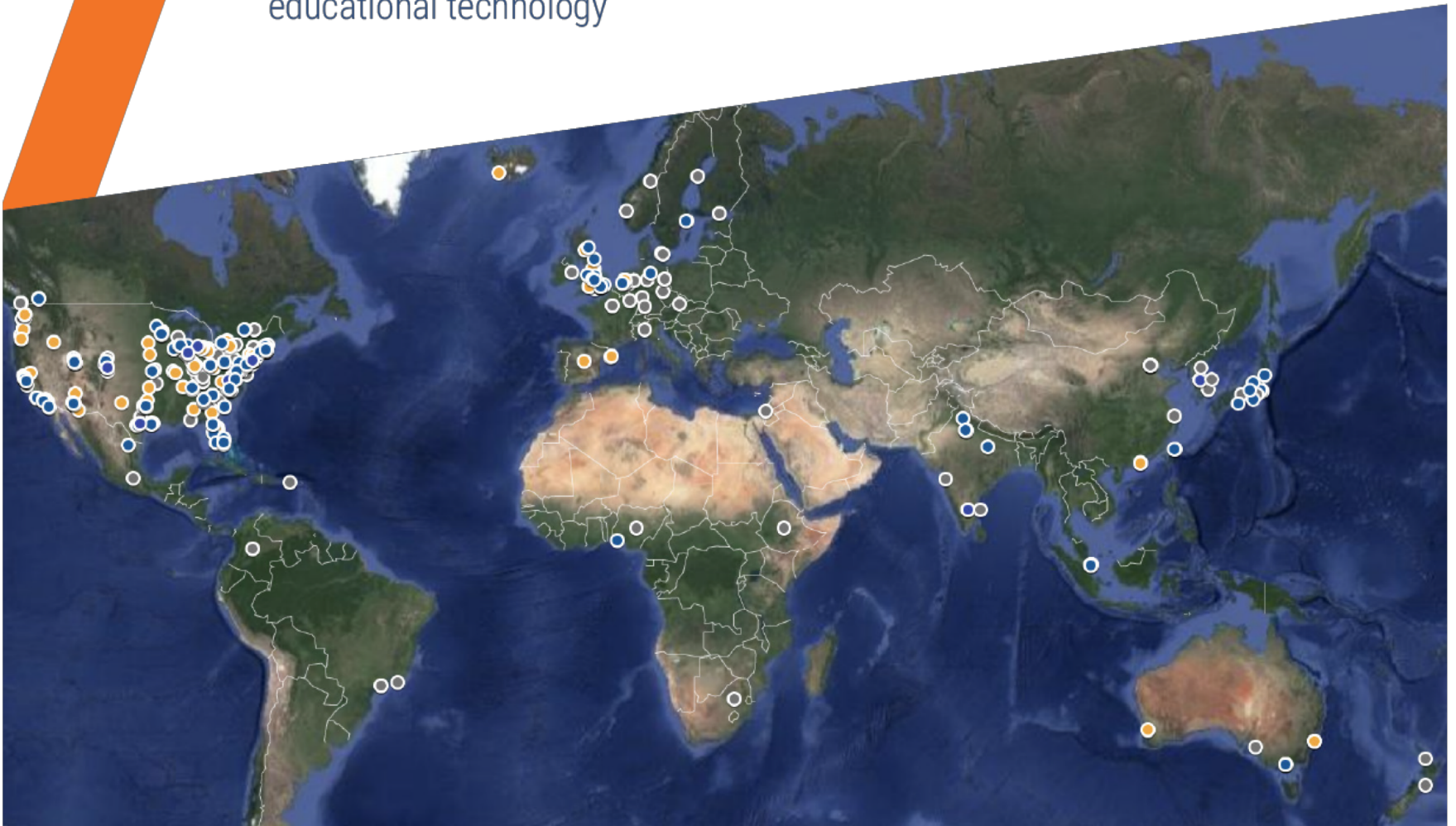
\$6,935,682
2017 NET ASSETS

Revenue, Membership Totals and Net Assets 2005-2017





Growing to over **475 MEMBERS—**
suppliers, higher education institutions, K-12 school districts, states,
and government organizations—who are the world leaders in
educational technology



COLLABORATION

Members in **22**
different countries



149 HED &
K-12 institutions

277 edtech suppliers



16 government/state
education agencies



South America 1%

EMEA 10%

Canada 3%

Asia-Pacific 7%

U.S.A. 79%

IMS Members by Region



IMS GLOBAL®
Learning Consortium
Better Learning From Better Learning Technology®



Adam Blum

Senior Director
ACT, Inc



IMS GLOBAL[®]

Learning Consortium

Better Learning From Better Learning Technology[®]



Keith Osburn

Associate Superintendent, Georgia Virtual Learning
Georgia Department of Education



IMS GLOBAL®
Learning Consortium
Better Learning From Better Learning Technology®



Ray Baranoski

Senior Software Developer
SAFARI Montage



IMS GLOBAL®
Learning Consortium
Better Learning From Better Learning Technology®



Vikash Jaiswal

Chief Technology Officer
Knovation, Inc.

Questions?



LEARNING IMPACT LEADERSHIP INSTITUTE

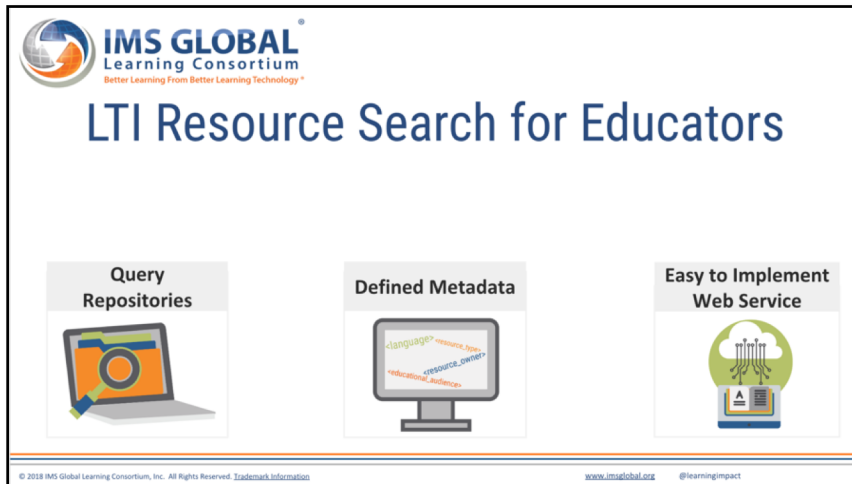
20-23 MAY 2019 | SAN DIEGO, CALIFORNIA



imsglobal.org/LILI2019

Related Resources

LTI Resource Search for Educators (presentation)



The screenshot shows a presentation slide with the IMS GLOBAL Learning Consortium logo at the top. The main title is "LTI Resource Search for Educators". Below the title are three key features highlighted in boxes: "Query Repositories" (with a laptop icon), "Defined Metadata" (with a monitor icon showing XML-like code), and "Easy to Implement Web Service" (with a server rack icon). At the bottom, there is a footer with copyright information, the website URL (www.imsglobal.org), and the Twitter handle (@learningimpact).

Resource Search Checklist and RFP Language

Resource Search Checklist and RFP Language

It is suggested that an RFP for any learning platform, tool or digital content would include a section with language requesting interoperability based on open standards along with other specific software requirements.

Background

Prior to the development of Learning Tools Interoperability® (LTI®) Resource Search, when an educator wanted to locate learning resources, he or she would have to search each learning object repository one at a time, select a resource, copy and paste the URL into the learning platform or tool where he or she wanted to make it available to students. To get the next resource, the educator would have to start the process all over again. Alternately, the educator might install a "resource picker" app into his or her learning platform, then collect resources into a "shopping cart", and then the selected resources from that particular app would be added to his or her course in the learning platform. And to go get resources from a different repository or catalog, the educator would have to start the process all over again.

This laborious method of gathering resources led to inconsistent user interfaces and kept the learning platform from being the main application interface for educators. This system has many opportunities for failure including configuration of the resource picker app, changes from one user interface (the learning platform) to another (the resource picker) and the need to collect and return data in an intermediary system rather than using web services to immediately return results.

Solutions

IMS Global Learning Consortium developed Resource Search as a solution to this problem. Educators have a more reliable way to search for learning objects across multiple providers from within their learning platform or tool. Learning platforms and tools make many more resources available to their users and have all results available in one place.

Resource Search Specification Details

Resource Search v.1 specification can be found here: <https://www.imsglobal.org/resource-search>

Suggested RFP Language

[Institution] is committed to a standards-based, interoperable teaching and learning technology ecosystem.

- The system procured through this RFP must meet conformance certification requirements as outlined in the specification documents for IMS Global Learning Consortium's LTI Resource Search standard version 1.0.
- We are requesting *[vendor/product]* obtain conformance certification by IMS Global Learning Consortium as a *[platform or tool]* no later than *[specific date]*.
- Evidence of a valid conformance certification, including a current registration number must be provided as listed in the IMS Global Product Directory located on the IMS Global website for each of the above IMS Global standards.
 - See <http://www.imscert.org>.
- The vendor is also required to remain current with the subsequent versions and applicable extensions, and receive conformance certification within a "reasonable" time period for each standard listed below.

Resource Search Checklist

Requirement	Answer
What is your IMS conformance Certification Number?	
If your product is not currently certified, will your product be certified by [INSERT DATE]?	
Are you familiar with IMS Global Learning Consortium?	
Are you a member in good standing of IMS Global?	
Are you committed to adopting / becoming certified on new versions of Resource Search as they are made available?	
What unique to this implementation of Resource Search?	

Technical Requirements

In addition to the functional requirements, the vendor's solution shall provide users with a wide variety of readily available and user-friendly interfaces to access the system, as well as provide an environment that allows for reliable and timely use of the content. In addition, the vendor's solution will integrate with third-party materials and software. Gaining conformance certification for IMS standards requires the vendor must maintain the highest levels of security in order to preserve and protect the confidentiality of data.

Action Items for Attendees

- Visit today's webinar detail page to gain access to all resources shared in today's session as well as the recording.
- Submit a proposal for Learning Impact Leadership Institute.
- Get involved in implementing and developing future versions of LTI Resource Search. Become a member of IMS Global today, contact us for details: info@imglobal.org