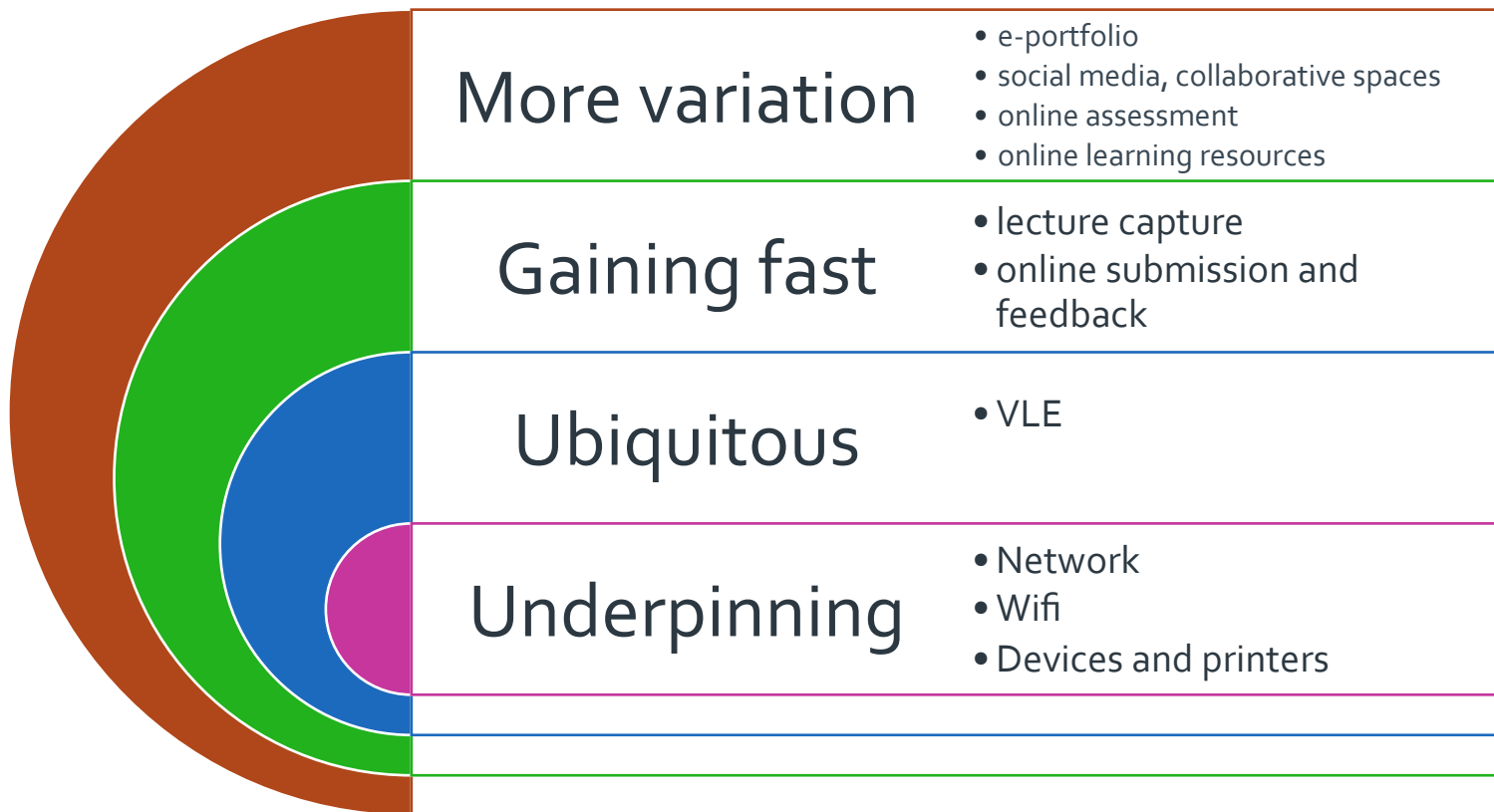


17-12-01

Next-generation learning environments

Sarah Davies, Head of higher education and student experience, Jisc



» Rely on their institution's VLE to do their coursework

80%

HE students

61%

FE learners



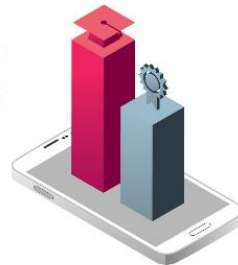
» Regularly access their institution's VLE via a mobile device

67%

HE students

48%

FE learners



BUT only 40% agree they enjoy using the collaborative features or want their tutors to use it more

- » Aggregate data into learner records warehouse
- » Enable API ecosystems
- » Explore 3D and immersive
- » Integration of physical and digital spaces
- » Incubate institutional innovations
- » Contextual inquiry into teaching and learning practices



We think it is time for a new type of learning environment, but what would this look like?

Jisc Learning Analytics open architecture: core

