

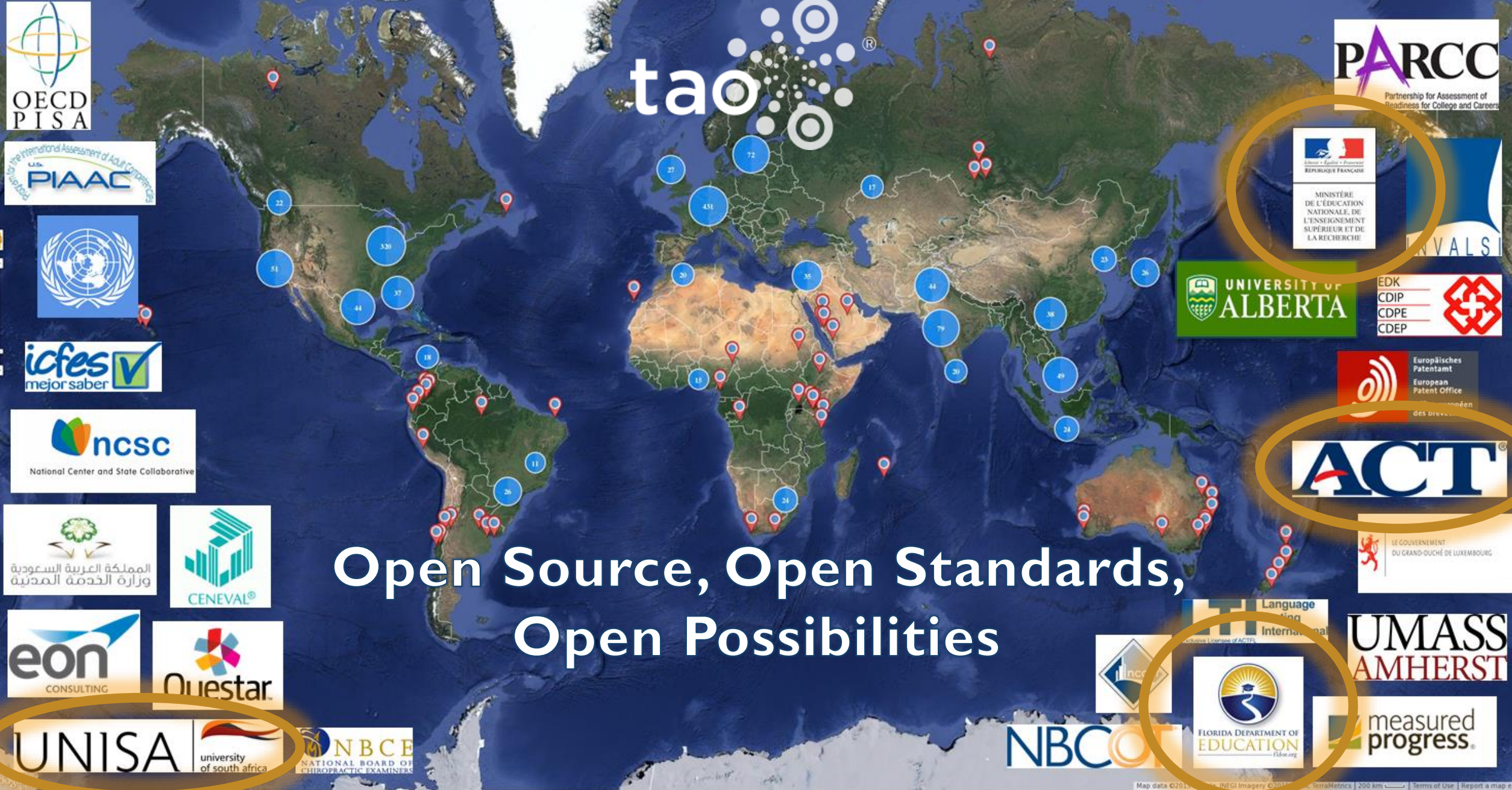
Deploying e-Assessment Services in Practice

Mark Molenaar
CTO Open Assessment Technologies
Co-chair IMS QTI® Technical Committee

Meanwhile in France...




tao



Open Source, Open Standards,
Open Possibilities



Technology Enhanced Items



Accessibility & Universal Design



Computer Adaptive Testing

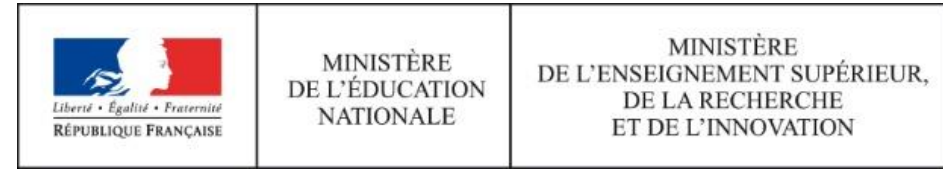


Integration with Learning



Technology Enhanced Items

Technology Enhanced Items



- ... are computer-delivered items that include specialized interactions for collecting response data. These include interactions and responses beyond traditional selected-response or constructed-response
- To enrich “traditional subjects” assessments
- To explore “new” competences (21st CS)
- Considerations
 - Accessibility
 - Hard(er) to analyze?
 - Expensive to develop; no interoperability?

Certaines touches de la calculatrice sont cassées. En utilisant les touches restantes, afficher **0,9** à l'écran.





Accessibility & Universal Design

Accessibility & Universal Design



- *The concept of designing all products and the built environment to be aesthetic and usable to the greatest extent possible by everyone, regardless of their age, ability, or status in life*
- Accommodations & tools
- Different devices & form factors
- Considerations
 - Psychometric impact
 - Security & BYOD
 - Presentation Fidelity?

Color contrast

Enables you to switch between different colors presets in order to increase the contrast

Pre-select the default profile :



Screen reader

Allows you to read a part or the whole item



Zoom

Increase or decrease the size of an item.



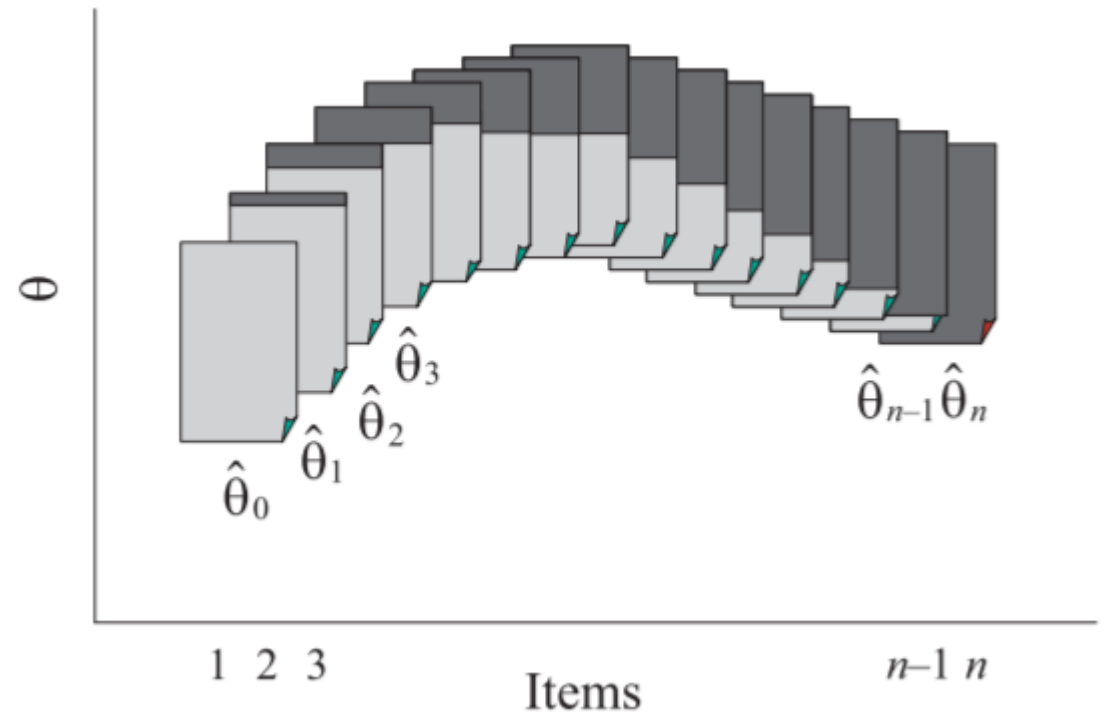
Computer Adaptive Testing

A landscape photograph featuring a road that splits into two paths leading through a golden field. The sky is filled with dramatic, dark clouds, and the sun is visible on the left side, creating a bright glow. The overall scene is atmospheric and suggests a choice or a path forward.

Computer Adaptive Testing



- *Test construction and test administration are computerized and individualized*
- Different types of methods and algorithms
- Less items required; shorter testing time
- Better measurement; accuracy known in advance
- Considerations
 - Large calibrated itembank required; parameters are assumed stable
 - Not usable for all topics/content domains; practical considerations
 - Expensive to develop; no interoperability?

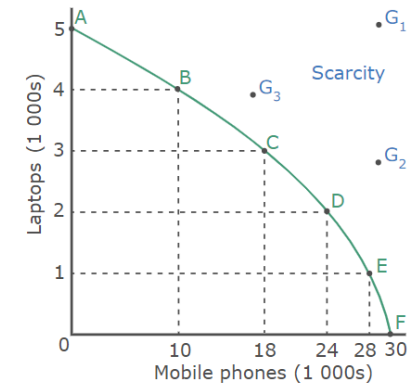


The background of the slide is a dark blue night sky filled with white lines representing constellations. Some stars are highlighted with small red and white dots. At the bottom of the image, the dark silhouette of a tree is visible against the sky.

Integration with Learning

Integration with Learning

- *The Next Generation Digital Learning Environment (NGDLE) is conceived as an ecosystem, a learning environment consisting of learning tools and components that adhere to common standards*
- N²GDLE adds Learner Credentials, Curriculum Mapping, Learning Pathways & Integrated Assessment
- Embedded, Stealth, Micro Assessment; collect/share data and provide recommendations
- Considerations
 - Data Privacy & Legislation
 - Interoperability?



Zanadu would certainly like to produce at a point such as point G_1 because it would have more mobile phones and laptops, but this is not possible because the country does not have enough resources. Points G_1 , G_2 , and G_3 therefore represent scarcity and lie outside the production possibilities curve.

Points on the production possibilities curve (A,B,C,D,E,F) indicate the possible or attainable combinations of laptops and mobile phones and can therefore be regarded as potential output. These points also indicate the boundaries of production.

To reach any point outside the production possibilities curve such as G_1 or G_2 or G_3 , Zanadu would need more resources and / or increase the efficiency of its current resources.

Do the following activity to make sure you understand positions of scarcity.

PPC Self Assessment Test 4 - Section 1

0%

A journalist at one of the newspapers in Paradiso asks your opinion on the following:

Based on the information below, a politician concluded that in the current period the country of Paradiso could produce a combination of 1 000 tons of food and five million guns.

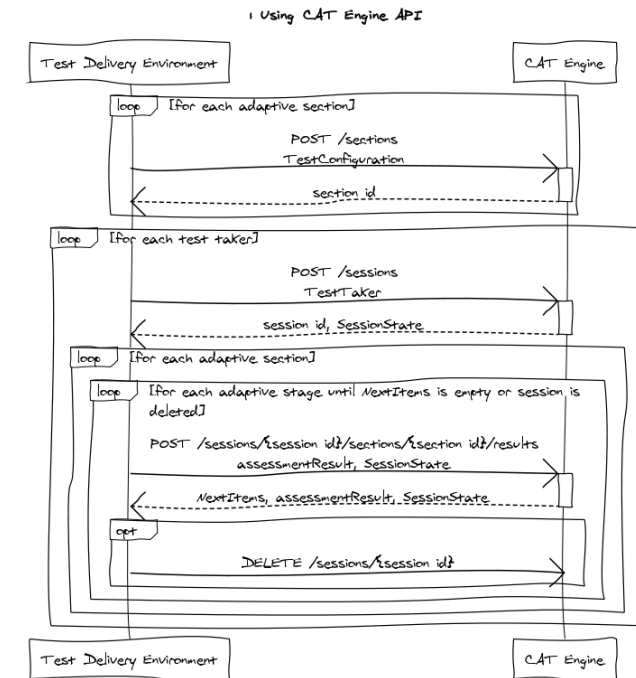
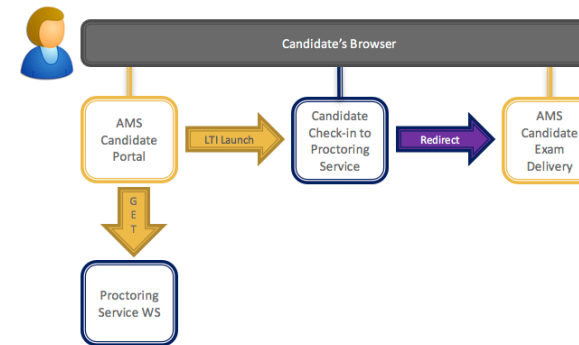
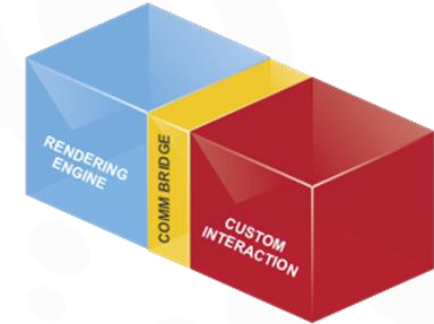
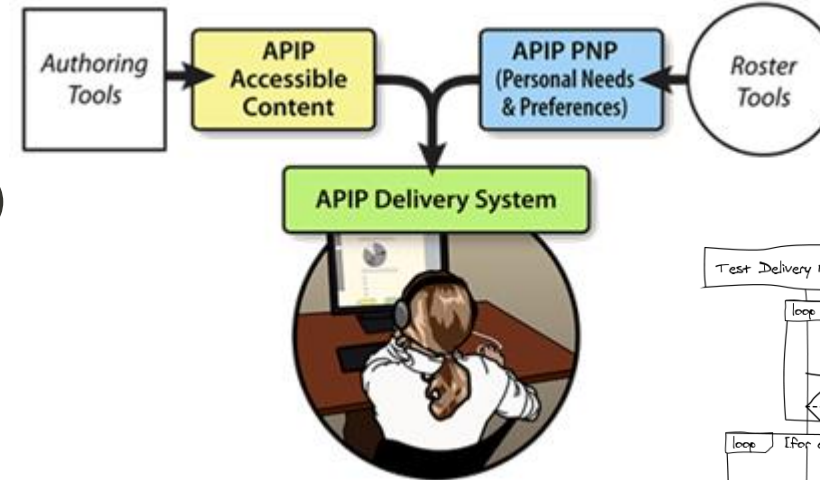
IMS Relations



IMS e-Assessment Activities



- Technology Enhanced Items
 - Portable Custom Interaction (PCI)
- Accessibility & Universal Design
 - Personal Needs & Preferences (PNP)
 - QTI 3: Shared Vocabularies
- Computer Adaptive Testing
 - Standard on CAT
- Integration with Learning
 - Competencies & Academic Standards Exchange (CASE) metadata
 - Caliper Assessment Metric Profile
 - Standard on Proctoring



Want to know more and get involved?

- Join the QTI Technical Workgroup and/or subgroups
- Join the IMS Executive Board on Assessment (EBA)
- Join our Bootcamp on e-Assessment Standards tomorrow afternoon!



Merci!

markm@taotesting.com