



Modern Employment and Digital Credentials

Tech Track



Modern Employment and Digital Credentials

Implementing Open Badges 2.0

Moderator:
Mark Leuba, IMS

Panelists:
Justin Pitcher, Chalk and Wire
Jonathan Finkelstein, Credly
Eric Rousselle, Discendum
Peter Janzow, Pearson

Hosted by  digitalme

 IMS GLOBAL
Learning Consortium

Supported by  The Open University  Jisc  cclaim



Modern Employment and Digital Credentials

Future of the Backpack

Moderator:
Matt Rogers, Digitalme

Panelists:
Justin Pitcher, Chalk and Wire
Peter Janzow, Pearson
Markus Gyling, IMS
Mark Leuba, IMS

Hosted by  digitalme

 IMS GLOBAL
Learning Consortium

Supported by  The Open University  Jisc  cclaim

Backpack session

Modern Employment & Digital

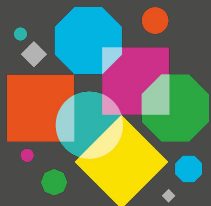
Credentials Event 1 Dec 2017

Tim Riches

Exec Director Digitalme

digitalme

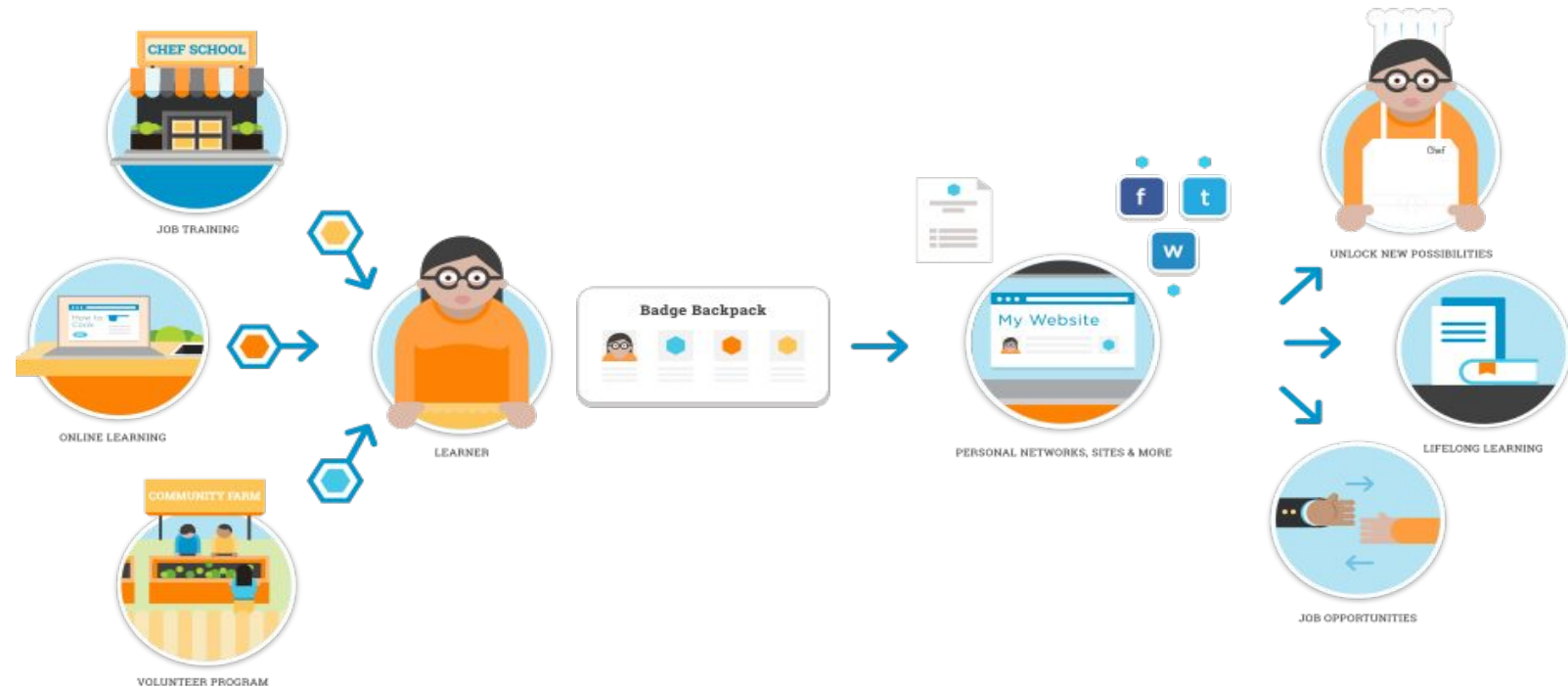
A City & Guilds Group Business



The Backpack

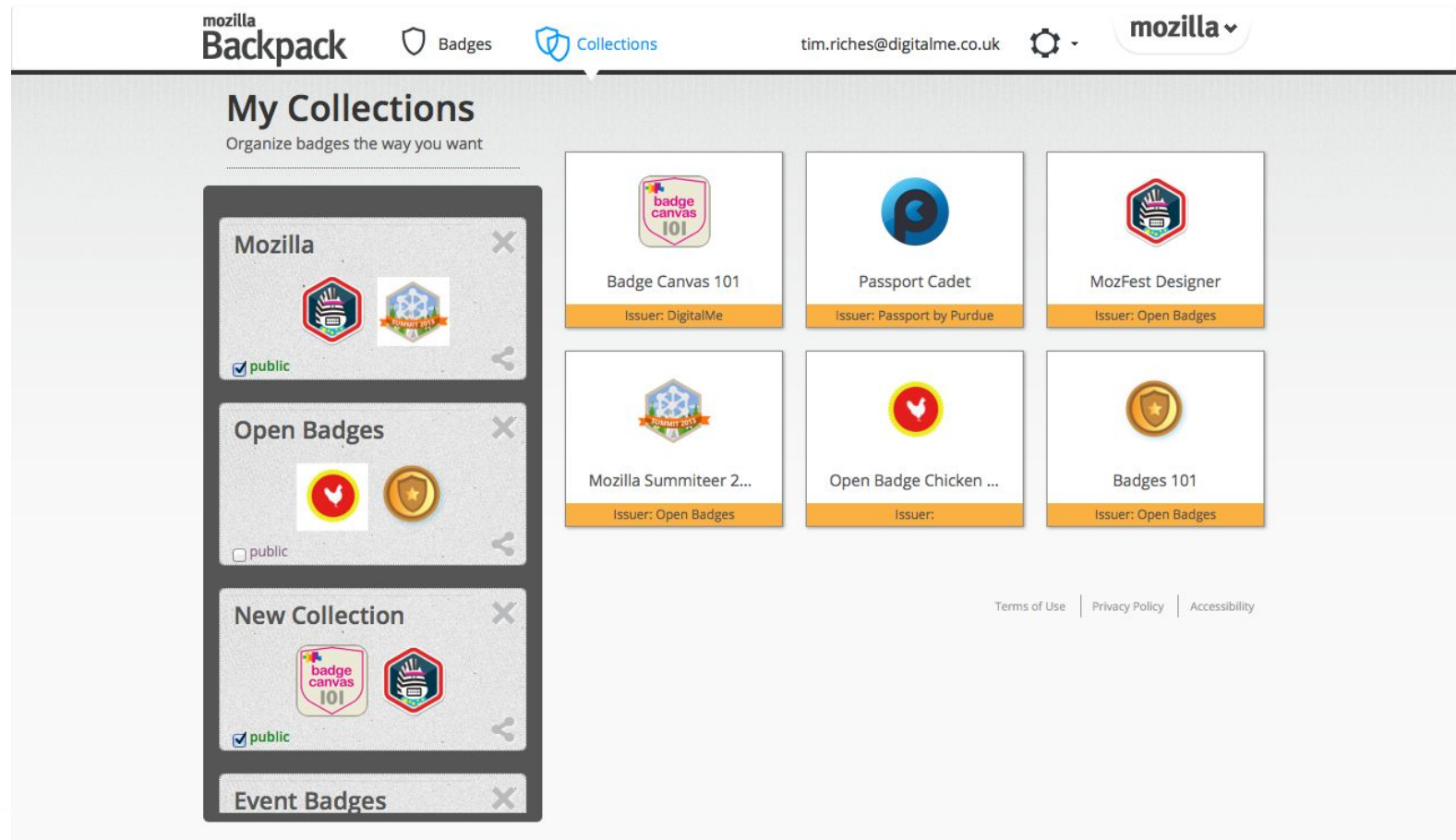
In 2011, Mozilla's Open Badges project changed the digital credentialing landscape as we knew it.

It provided a new way for learning to be captured and shared across the web to unlock education and work based opportunities for individuals.



The Backpack

The Mozilla Backpack allowed end users to store and move their badges between platforms, regardless of where they were issued from.



Mozilla always envisioned a network of backpacks

See Chris McAvoy's archived blog ["Let's make more backpacks"](#)

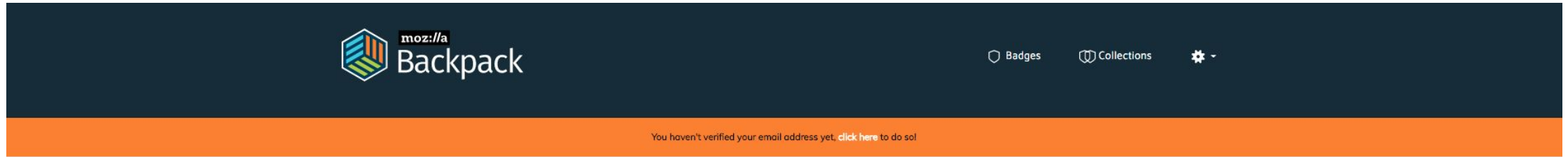
Digitalme and The Backpack

Digitalme and The Backpack

- Asked to **steward** the next stage of Backpack development
- Period of consultation with users
- Identified priority areas: V2 & Multiple emails
- Replaced Persona login system
- On staging reading for testing by platforms



Bringing in multiple emails and Email Verification



User Profile

Name

First Name

Last Name

UPDATE NAME

Associated Email Addresses

Email Address	Verified	Remove
matt.rogers@digitalme.co.uk PRIMARY <small>You have not yet verified ownership of this email address. Please verify ownership.</small>	✗	-

Associate an Email Address

ADD

Change Password

Password

Confirm

Password requirements:

- must be at least 10 characters long
- must contain at least one lowercase letter
- must contain at least one uppercase letter
- must contain at least one number
- must contain at least one special character
- may not contain sequences of three or more repeated characters

UPDATE PASSWORD

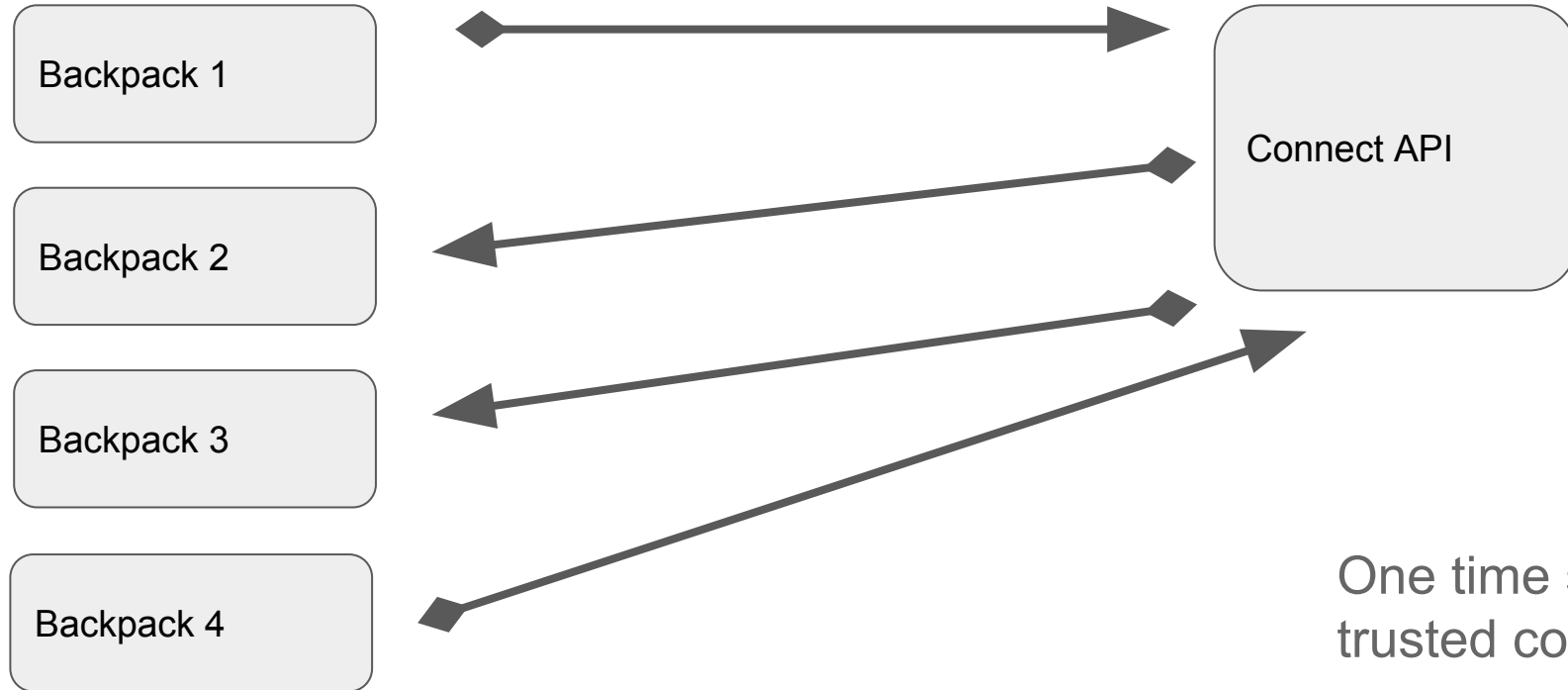
Delete Account

If you wish to delete your account permanently, click the button below and we will send you a code in an email to your primary email address. You can then enter the code in the field that subsequently appears below to delete the account.

Please note: If you delete your account, all associated data will be removed from the database, including badges, badge collections and Backpack Connect sessions.

REQUEST ACCOUNT DELETION CODE

Backpack Connect



One time sign in creates a trusted connection.

Questions?

Points for consideration:

- Pause until we get feedback and have conversations with sector
- Possible avenues
 - Protocal
 - Connect API
 - 'Dropbox model'
- Is the backpack still needed with version 2.0?

Appendicies

In 2016 / 2017 we carried out a consultation with members of the open badges community and IMS members.

6 June 2017 we started a working group to discuss potential routes forward. This was the first time we had broad agreement from the group about the direction.

[See discussion here.](#)

Blogs from the Digitalme team based around this consultation

[Backpack and Digitalme](#) - *Omid Mufeed*

[We need to talk about The Backpack](#) - *Jason McGonigle*

[Backpack - I Choose You!](#) - *Matt Rogers*





Modern Employment and Digital Credentials

Competency Mapping Approaches

Colin Smith, IMS Global
Ilona Buchem, Beuth University

Competency Mapping Approaches: IMS Competencies & Academic Standards Exchange (CASE)

Colin Smythe
Chief Architect (IMS Global)
c.smythe@imglobal.org

Contents

- IMS History of Specifications
- The CASE Specification
- What Next for CASE?

IMS Specification Suite

- [Accessibility](#)
- [Accessible Portable Item Protocol[®]](#)
- [Caliper Analytics[®]](#)
- [Competency Definitions](#)
- [Content Packaging](#)
- [Common Cartridge[®]](#)
- [Competencies and Academic Standards Exchange[™]](#)
- [Course Planning and Scheduling](#)
- [Digital Repositories](#)
- [Enterprise](#)
- [Enterprise Services](#)
- [ePortfolio](#)
- [General Web Services](#)
- [Interactive WhiteBoard/ Common File Format](#)
- [Learner Information](#)
- [Learning Design](#)
- [Learning Information Services](#)
- [Learning Object Discovery and Exchange](#)
- [Learning Tools Interoperability[®]](#)
- [Meta-data](#)
- [OneRoster[®]](#)
- [Open Badges](#)
- [Question and Test Interoperability](#)
- [Resource List Interoperability](#)
- [Shareable State Persistence](#)
- [Simple Sequencing](#)
- [Student Induction to e-Learning](#)
- [Tools Interoperability](#)
- [Vocabulary Definition Exchange](#)
- [Resource Description Framework Bindings \(RDF\)](#)

We will release at least 3 new specifications in early 2018 with new versions of several other specifications during 2018.

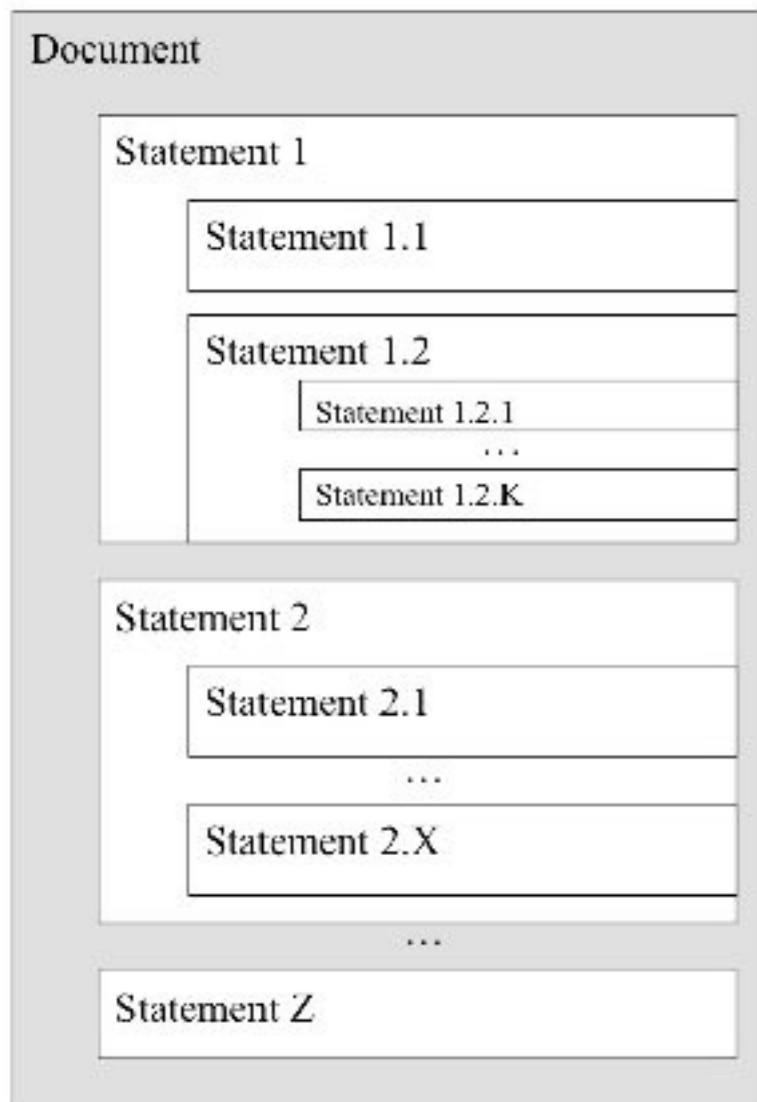
Contents

- IMS History of Specifications
- **The CASE Specification**
- What Next for CASE?

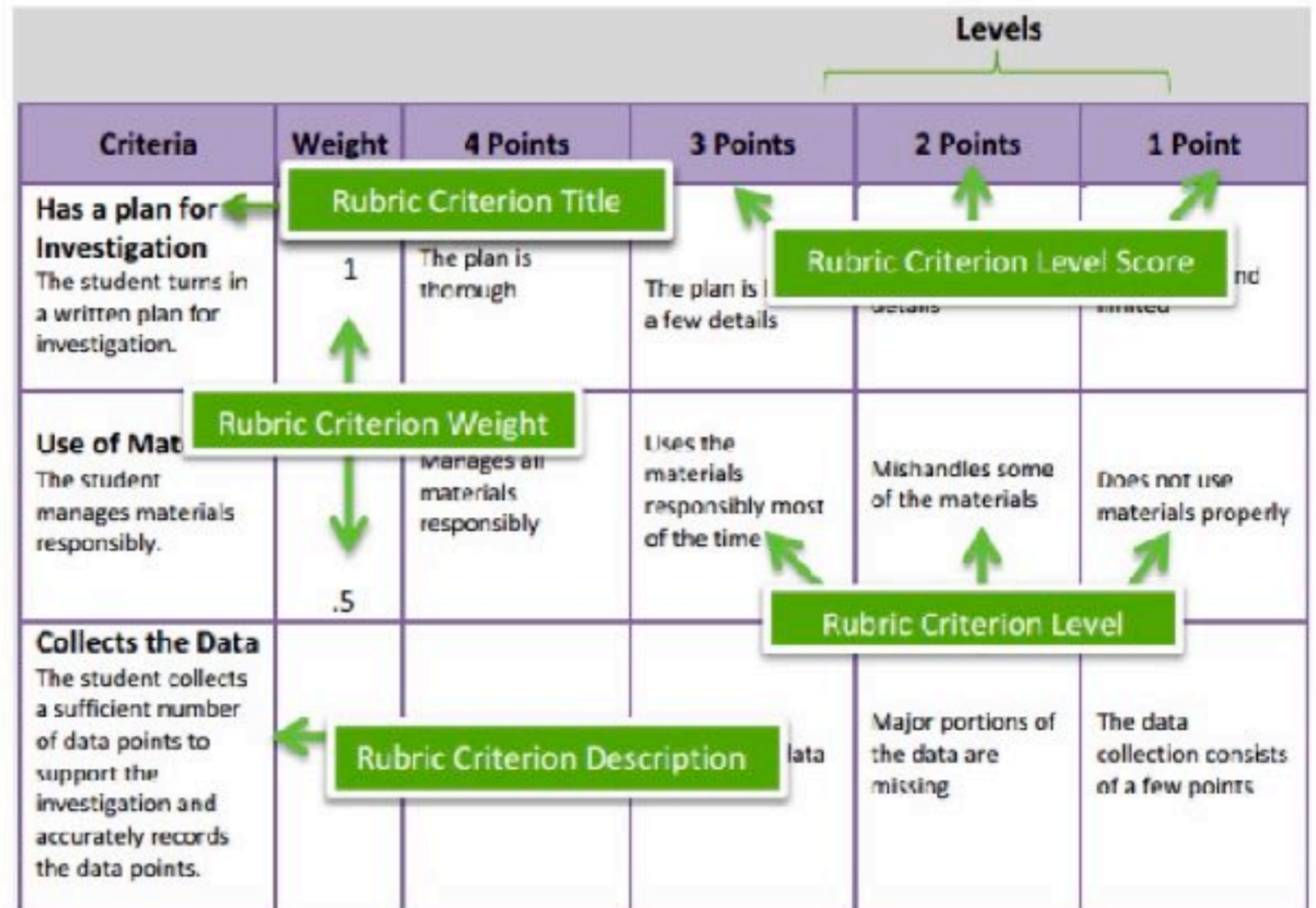
CASE 1.0 Scope

- CASE™ is used to exchange information about learning and education competencies. CASE also transmits information about rubrics, criteria for performance tasks, which may or may not be aligned to competencies
- Can exchange associations between competency frameworks

Standards & Rubrics

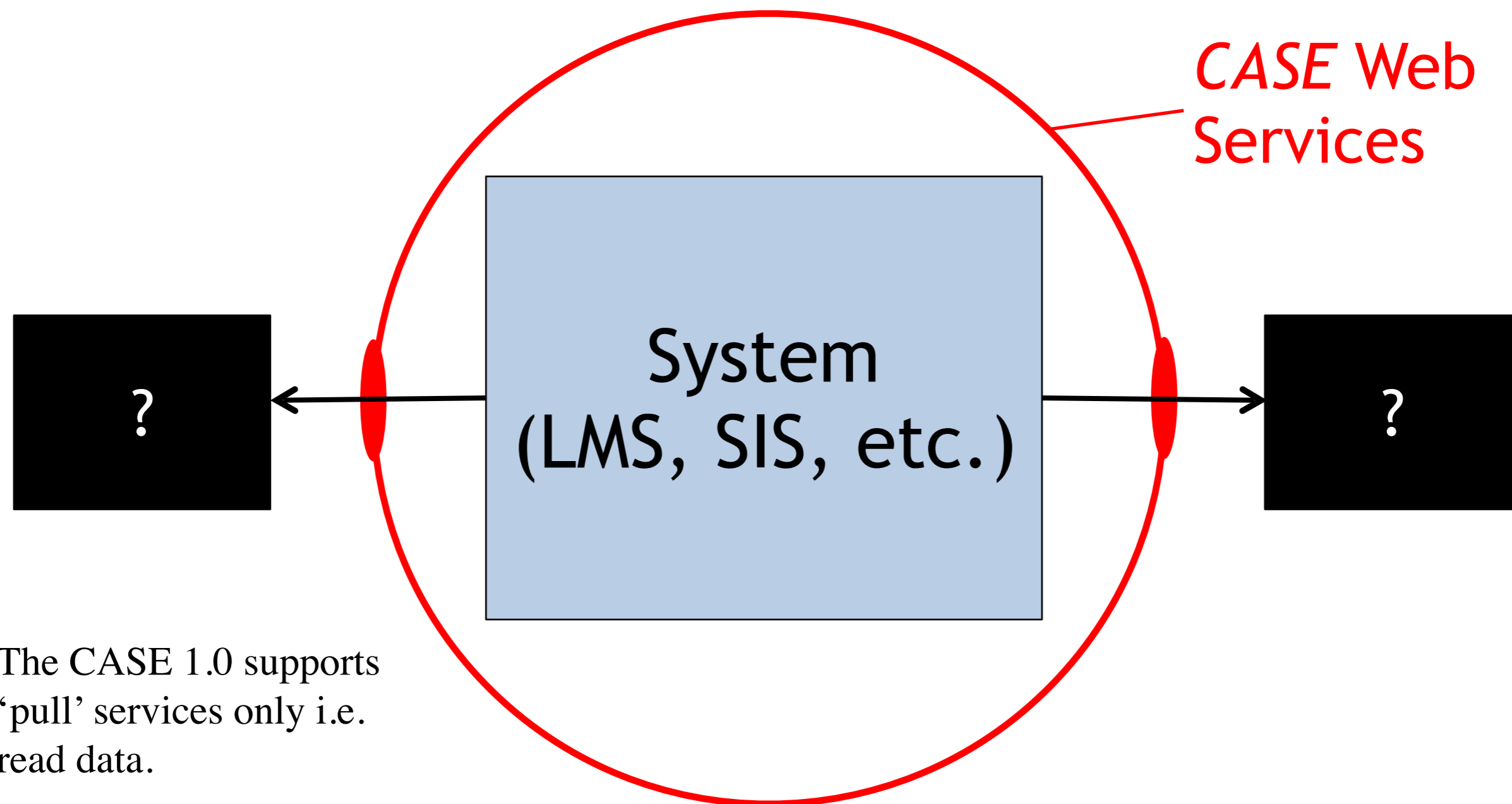


Structure of a Standard



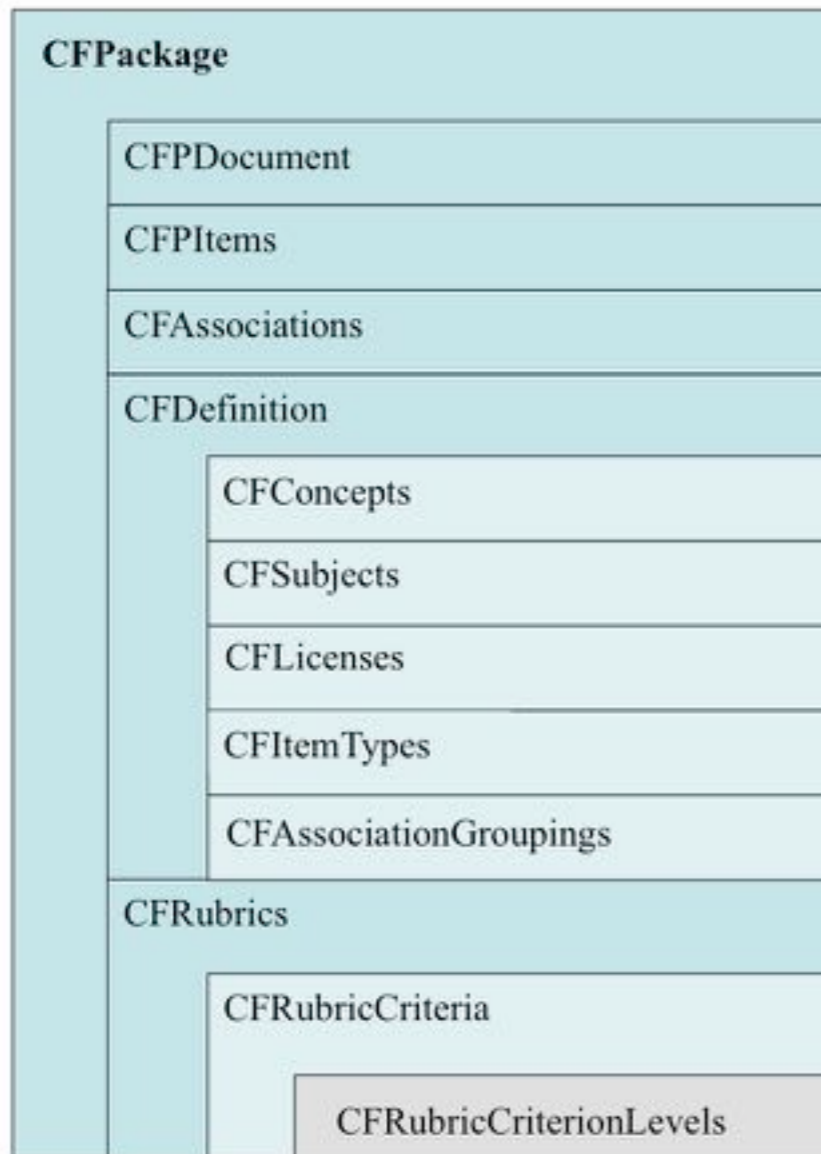
Structure of a Rubric

CASE Interoperability



The CASE 1.0 supports 'pull' services only i.e. read data.

CASE Package



- This package is exchanged as a JSON payload using the REST-service definition
- Subsets of this structure can also be exchanged

CASE Current State

- Released in July 2017
- See: <https://www.imsglobal.org/activity/case>
- Small number of vendors are certified (consumers and providers)

CASE Next Steps

- Integrate with other IMS specifications
 - OneRoster
 - Common Cartridge
 - Question & Test Interoperability
 - LTI Resource Search
 - Extended Transcript
- Identify pain-points for potential CASE 1.1 development

Summary

- CASE supports the exchange of:-
 - Competencies and Academic Standards definitions
 - Rubrics definitions
 - Mappings between competency frameworks
- CASE specification released in July 2017
 - See: <https://www.imsglobal.org/activity/case>
- Next steps are to embed the use of CASE identifiers CASE in other IMS specifications

Questions & Comments